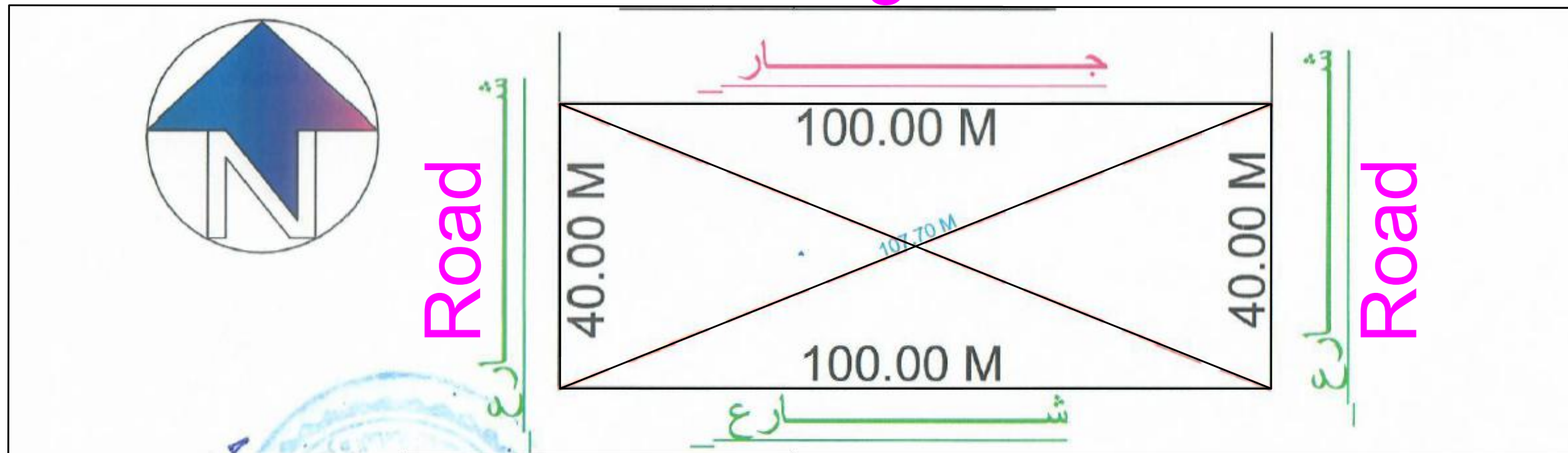


- NOTES:
1. All dimension in mm
 2. Do not scale. Use indicated dimensions
 3. All concrete works must be cured for a minimum of seven days
 4. Excavation works must be approved prior to backfill
 5. All waste water conduits must be encased in concrete before backfill
 6. All metal surfaces MUST be painted with antirust paint. Welding joints must be smooth and well filled

Neighbour



Road

Revision History			
RevID	ChID	Change Name	Date

Company Title

UNHCR DARFUR OPERATION
 AL MATAR AREA
 NEAR SAUDI HOSPITAL
 EL-FASHER, NORTH DARFUR

**CONSTRUCTION OF
 BOUNDARY WALL
 FOR UNHCR EDDAEIN,
 EAST DARFUR STATE**

Drawing Name
GENERAL LAYOUT PLAN

Drawing Status
FOR TENDER

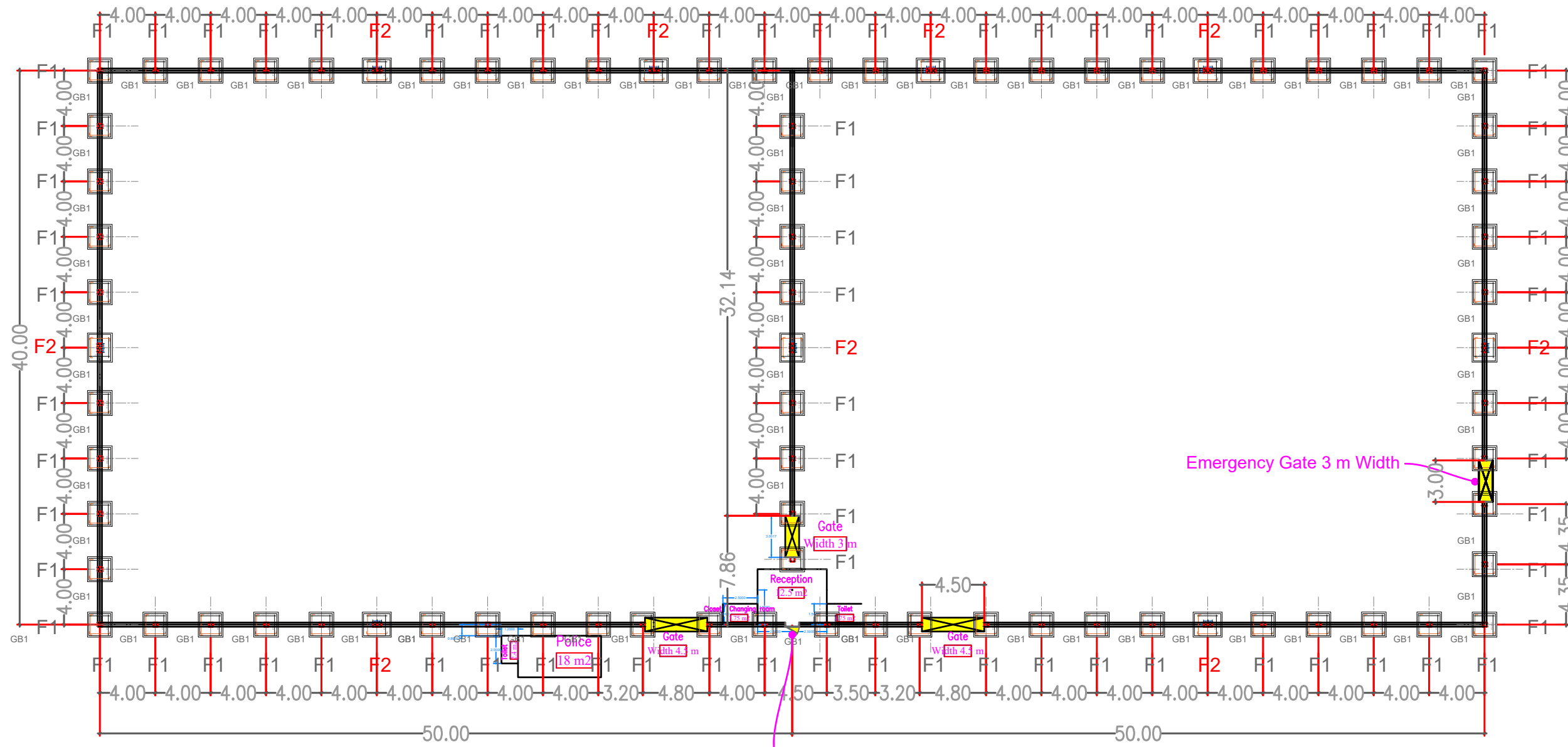
Designed by
M. Esam Date
 08. Nov. 2022

Checked by
M. Esam Date

Drawing Scale
AS INDICATED

PROJECT NO:
ED-2022 Revision

- NOTES:
1. All dimension in mm
 2. Do not scale. Use indicated dimensions
 3. All concrete works must be cured for a minimum of seven days
 4. Excavation works must be approved prior to backfill
 5. All waste water conduits must be encased in concrete before backfill
 6. All metal surfaces MUST be painted with antirust paint. Welding joints must be smooth and well filled



Revision History			
RevID	ChID	Change Name	Date

Company Title

UNHCR DARFUR OPERATION
 AL MATAR AREA
 NEAR SAUDI HOSPITAL
 EL-FASHER, NORTH DARFUR

CONSTRUCTION OF BOUNDARY WALL FOR UNHCR EDDAEIN, EAST DARFUR STATE

Drawing Name
GENERAL LAYOUT PLAN

Drawing Status
FOR TENDER

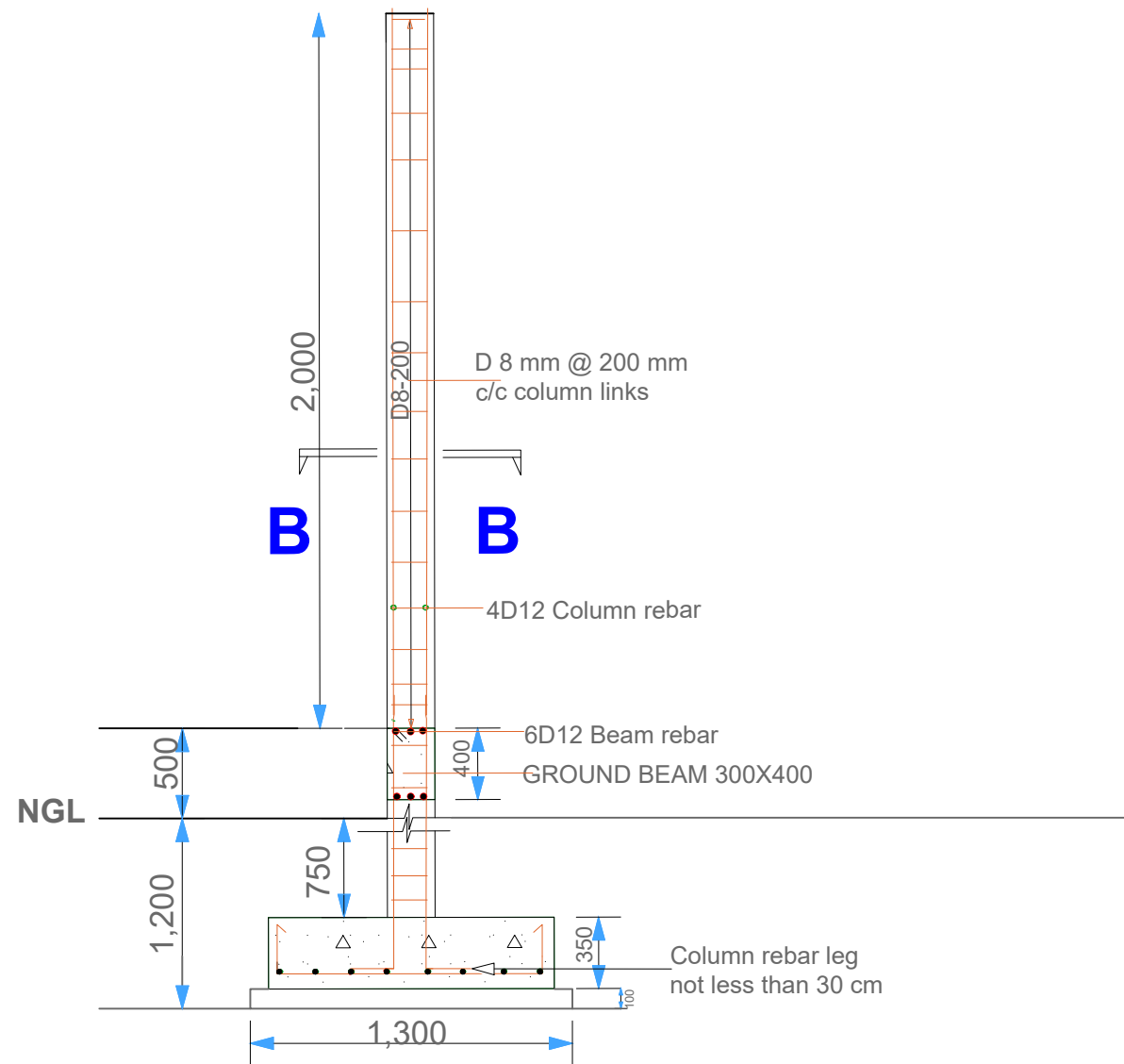
Designed by **M. Esam** Date 08. Nov. 2022

Checked by **M. Esam** Date

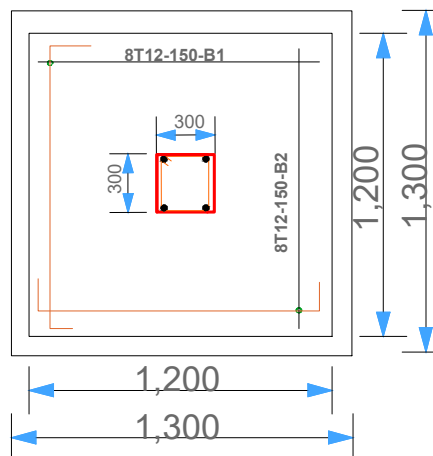
Drawing Scale
AS INDICATED

PROJECT NO: **ED-2022** Revision

- NOTES:
1. All dimension in mm
 2. Do not scale. Use indicated dimensions
 3. All concrete works must be cured for a minimum of seven days
 4. Excavation works must be approved prior to backfill
 5. All waste water conduits must be encased in concrete before backfill
 6. All metal surfaces MUST be painted with antirust paint. Welding joints must be smooth and well filled



CROSS SECTION BB



**TYPICAL COLUMN/COLUMN BASE
F1/C1/B1: 70 NO OF F1**

Revision History			
RevID	ChID	Change Name	Date

Company Title

UNHCR DARFUR OPERATION
AL MATAR AREA
NEAR SAUDI HOSPITAL
EL-FASHER, NORTH DARFUR

**CONSTRUCTION OF
BOUNDARY WALL
FOR UNHCR EDDAEIN,
EAST DARFUR STATE**

Drawing Name
FOOTING F1 & COLUMN DETAILS

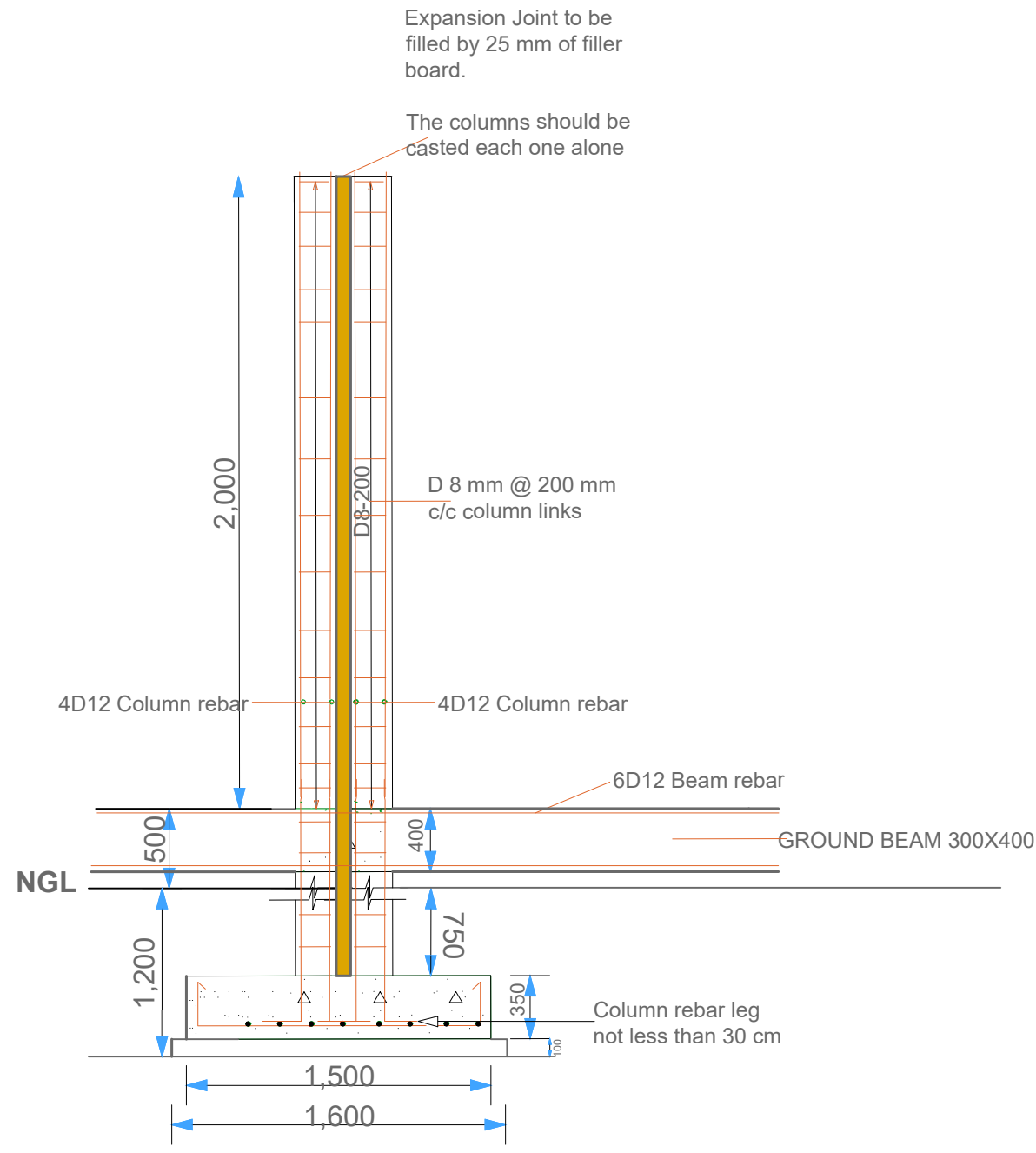
Drawing Status
FOR TENDER

Designed by **M. Esam** Date 08. Nov. 2022

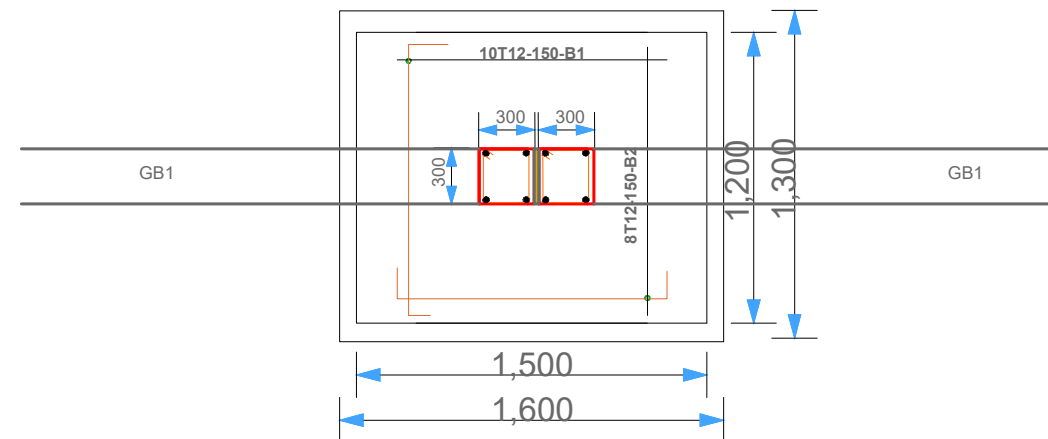
Checked by **M. Esam** Date

Drawing Scale
AS INDICATED

PROJECT NO: **ED-2022** Revision



SIDE VIEW



**TYPICAL COLUMN/COLUMN BASE
F2/C1/B1: 9 NO OF F2**

Expansion Joint to be filled by 25 mm of filler board.
The columns should be casted each one alone

- NOTES:**
1. All dimension in mm
 2. Do not scale. Use indicated dimensions
 3. All concrete works must be cured for a minimum of seven days
 4. Excavation works must be approved prior to backfill
 5. All waste water conduits must be encased in concrete before backfill
 6. All metal surfaces **MUST** be painted with antirust paint. Welding joints must be smooth and well filled

Revision History

RevID	ChID	Change Name	Date

Company Title

UNHCR DARFUR OPERATION
AL MATAR AREA
NEAR SAUDI HOSPITAL
EL-FASHER, NORTH DARFUR

**CONSTRUCTION OF
BOUNDARY WALL
FOR UNHCR EDDAEIN,
EAST DARFUR STATE**

Drawing Name
FOOTING F2 & COLUMN DETAILS

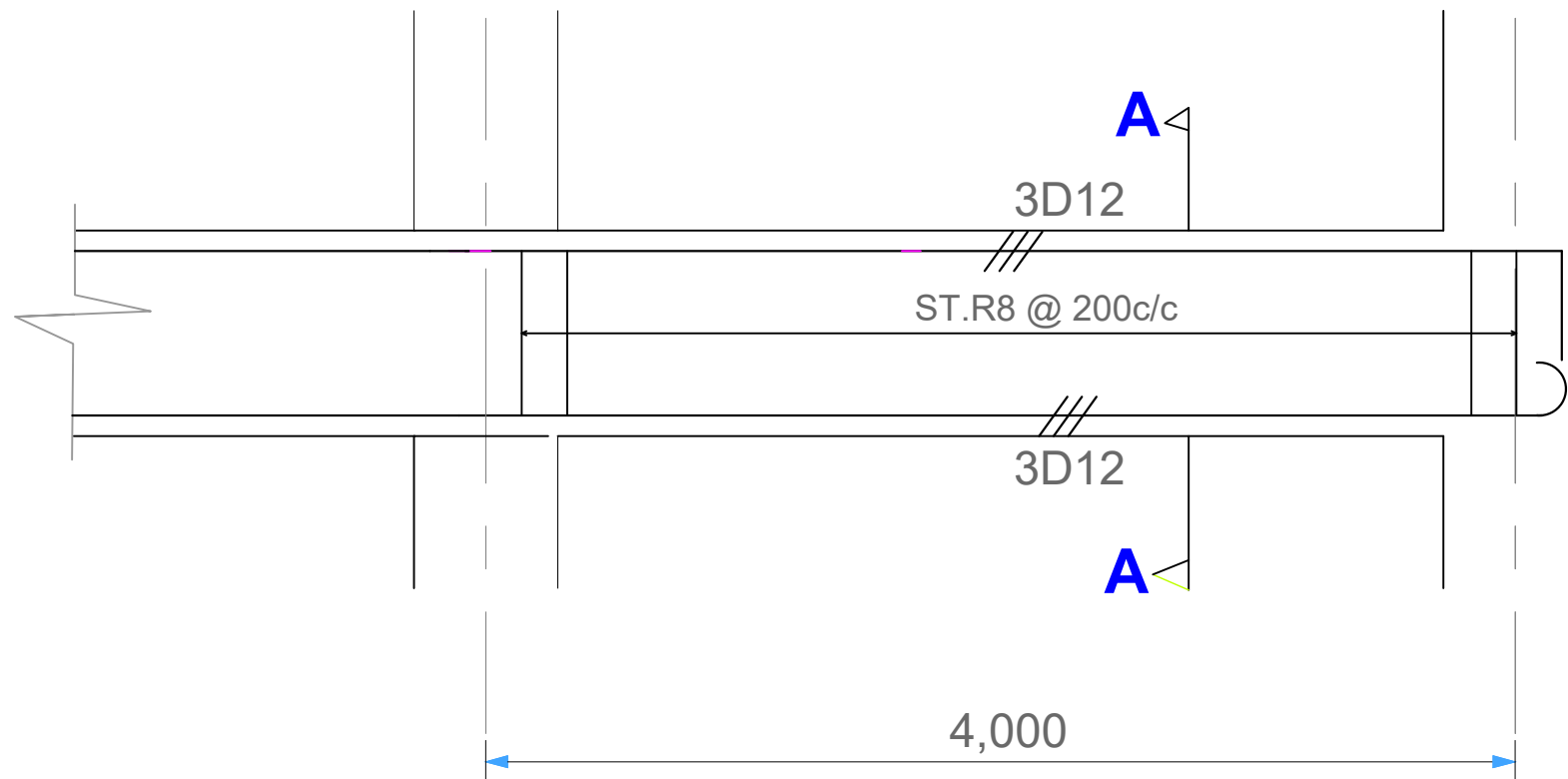
Drawing Status
FOR TENDER

Designed by **M. Esam** Date 08. Nov. 2022

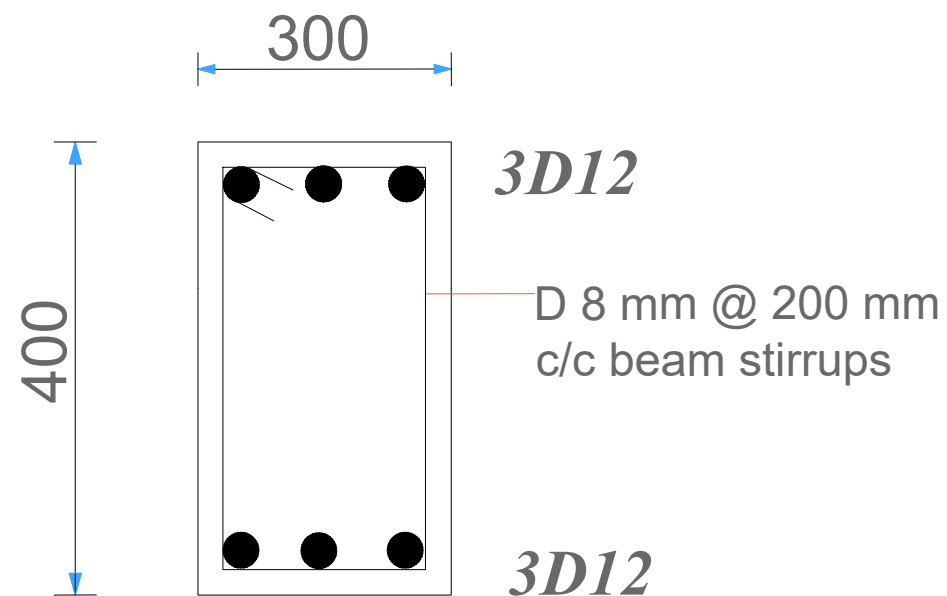
Checked by **M. Esam** Date

Drawing Scale
AS INDICATED

PROJECT NO: **ED-2022** Revision



Beam Detail GB1



SEC A-A

- NOTES:
1. All dimension in mm
 2. Do not scale. Use indicated dimensions
 3. All concrete works must be cured for a minimum of seven days
 4. Excavation works must be approved prior to backfill
 5. All waste water conduits must be encased in concrete before backfill
 6. All metal surfaces MUST be painted with antirust paint. Welding joints must be smooth and well filled

Revision History			
RevID	ChID	Change Name	Date

Company Title

UNHCR DARFUR OPERATION

AL MATAR AREA
NEAR SAUDI HOSPITAL
EL-FASHER, NORTH DARFUR

CONSTRUCTION OF BOUNDARY WALL FOR UNHCR EDDAEIN, EAST DARFUR STATE

Drawing Name

GRADE BEAM DETAILS

Drawing Status

FOR TENDER

Designed by

M. Esam Date
08. Nov.2022

Checked by

M. Esam Date

Drawing Scale

AS INDICATED

PROJECT NO:

ED-2022 Revision